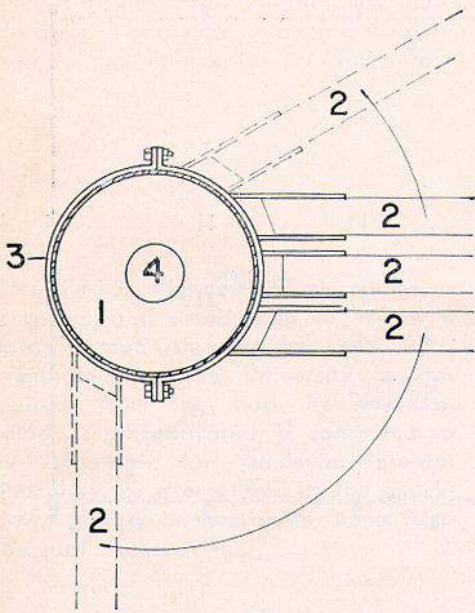


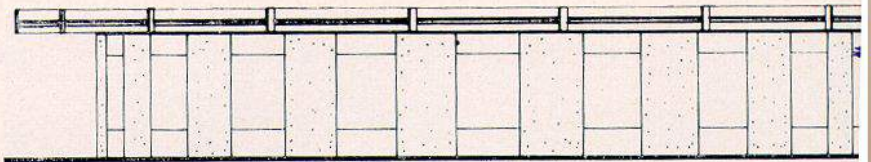
Escola primária

Primary school

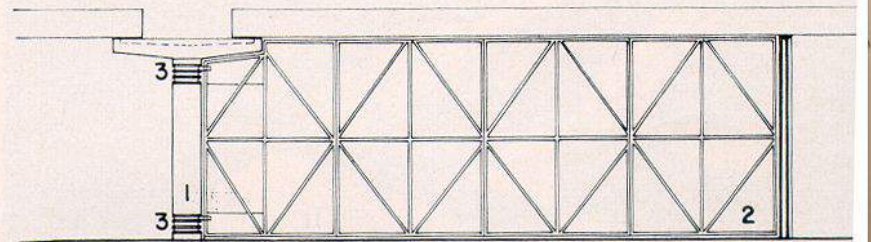
146



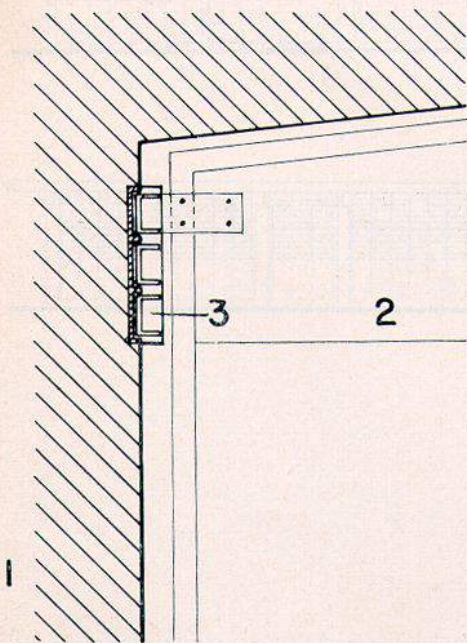
1



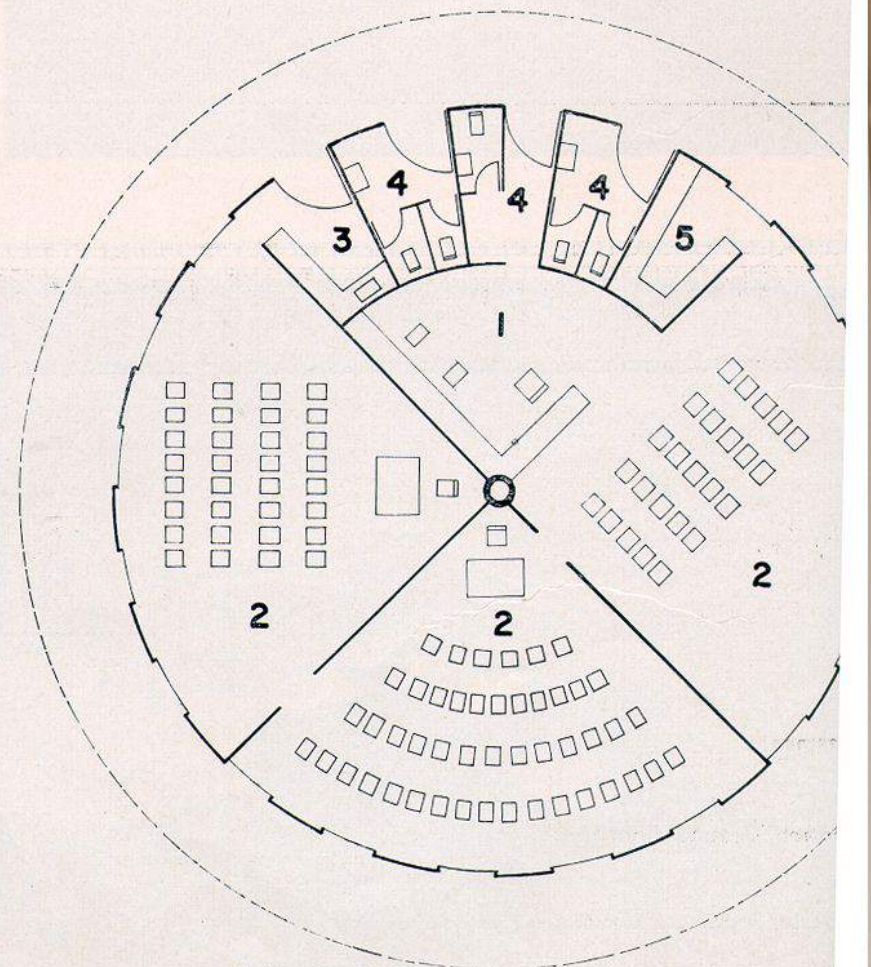
Fachada/Elevation



1 A



1 B

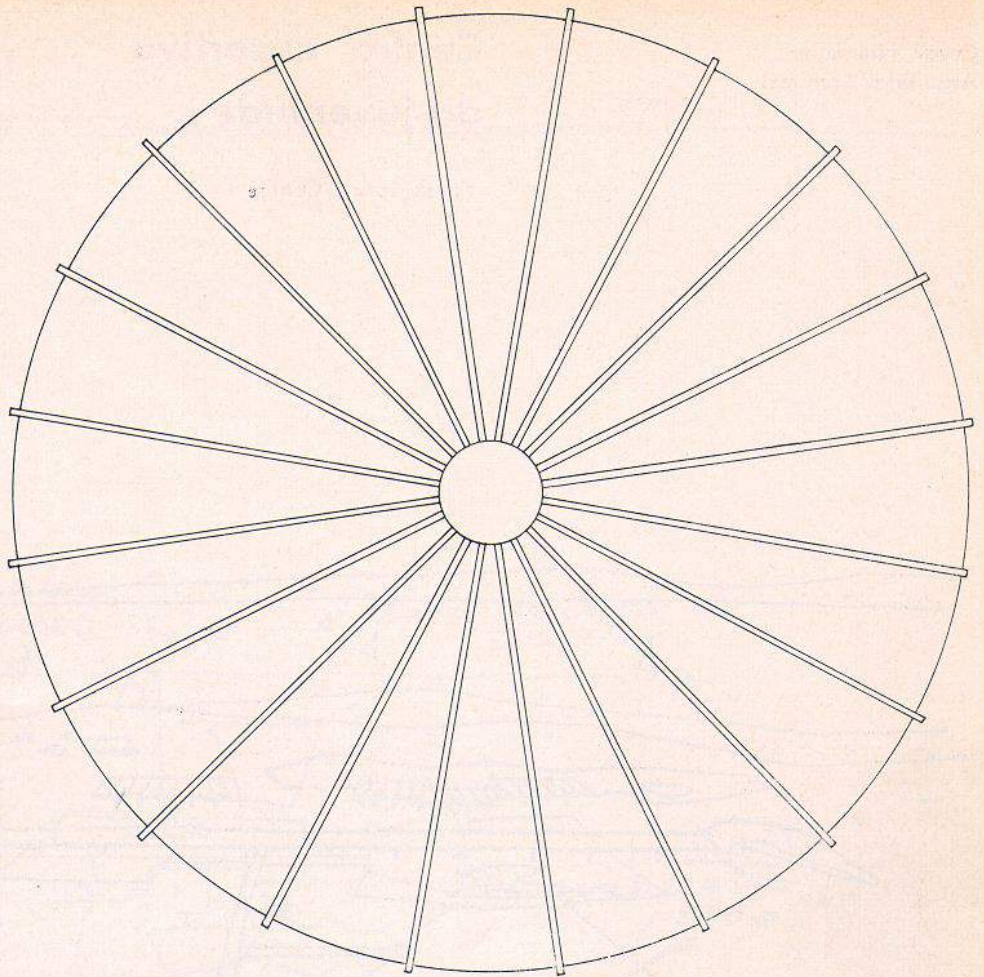


2

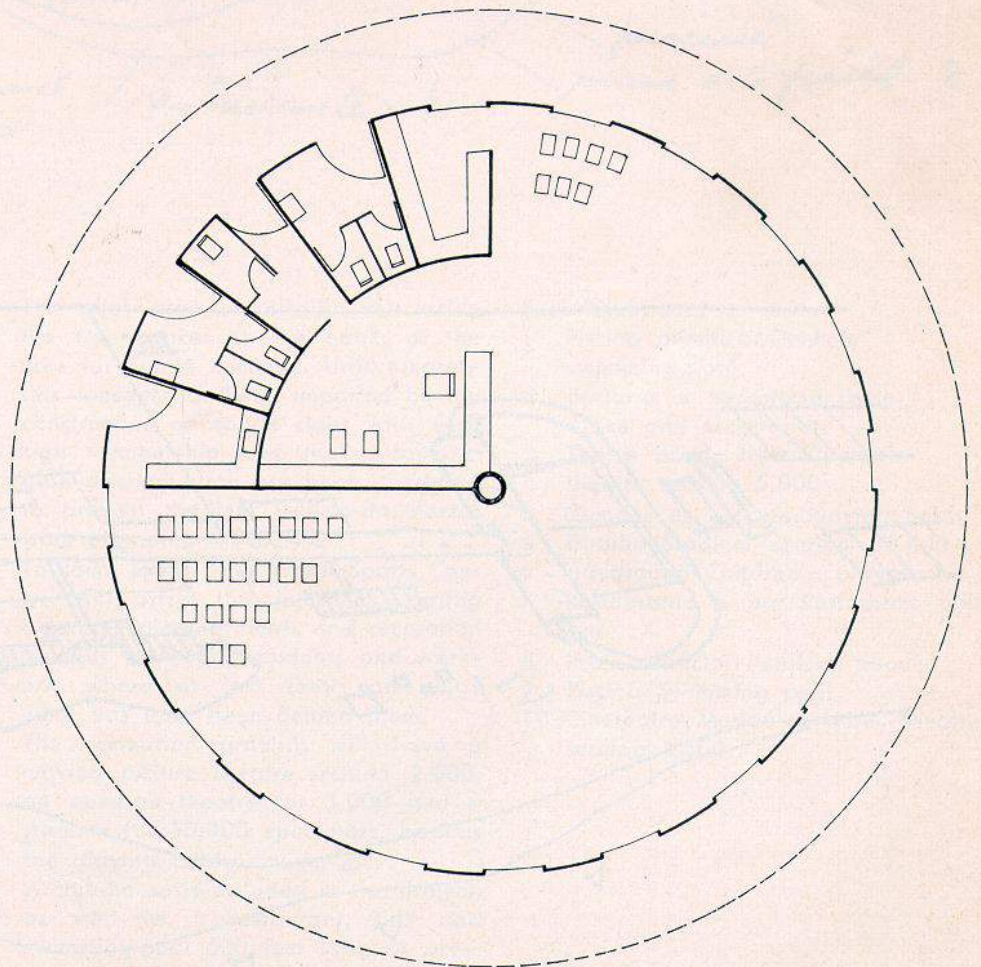
O projeto dessa escola teve como objetivo principal uma construção simples, econômica e de fácil aplicação por todo o País. Para isso, seus elementos — pré-fabricados — se subordinam às condições de transporte (caminhão) e à possibilidade de ser montada em qualquer lugar em poucas horas. Como o prédio terá duas finalidades diferentes, — de dia escola e à noite clube rural, — suas divisões internas são removíveis, o que explica a parede pivotante, que possibilita dividir o grande salão em duas ou três salas de aula.

This school was designed with the main object of keeping the construction simple, economical and easy to assemble anywhere throughout the country. For this reason, the prefabricated elements are dimensioned for transportation by truck and arranged so that the building can be put together in a few hours on the most out-of-the-way sites.

As the premises are liable to be used for various purposes, e.g. a school by day and a rural club by night, revolving walls have been incorporated so that the main hall can be partitioned off into two or three classrooms.



Cobertura/Roof



1/1 A/1 B

Detalhes da parede pivotante/Details of revolving walls

- 1 Apoio central de concreto/Central bearing column in concrete
- 2 Paredes corrediças/Revolving walls
- 3 Bronzina/Bushing
- 4 Águas pluviais/Rainwater collector

2/2 A

- 1 Professor/Teacher
- 2 Sala de aula/Classroom
- 3 Copa/Pantry
- 4 Sanitários/Lavatories
- 5 Oficina/Workshop