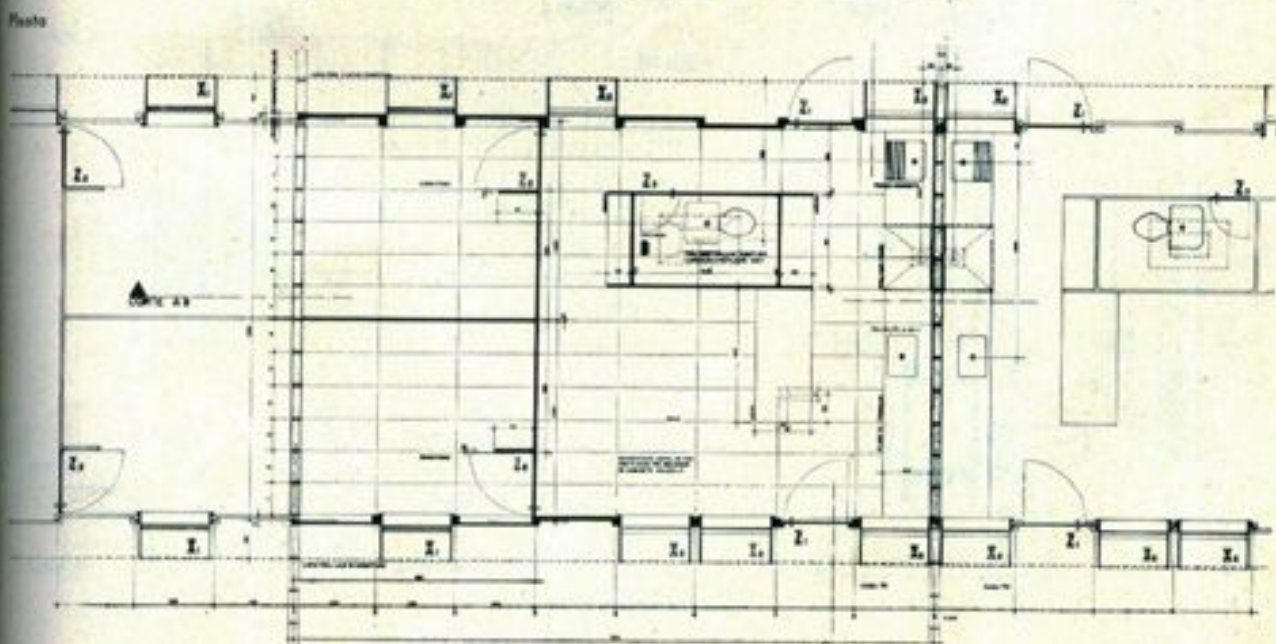
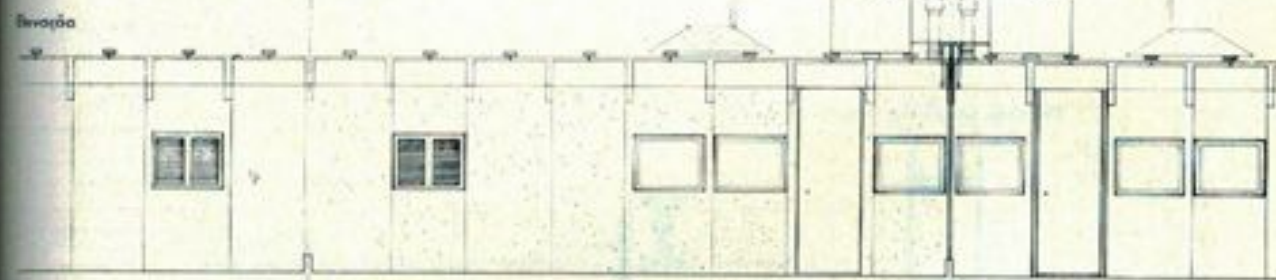
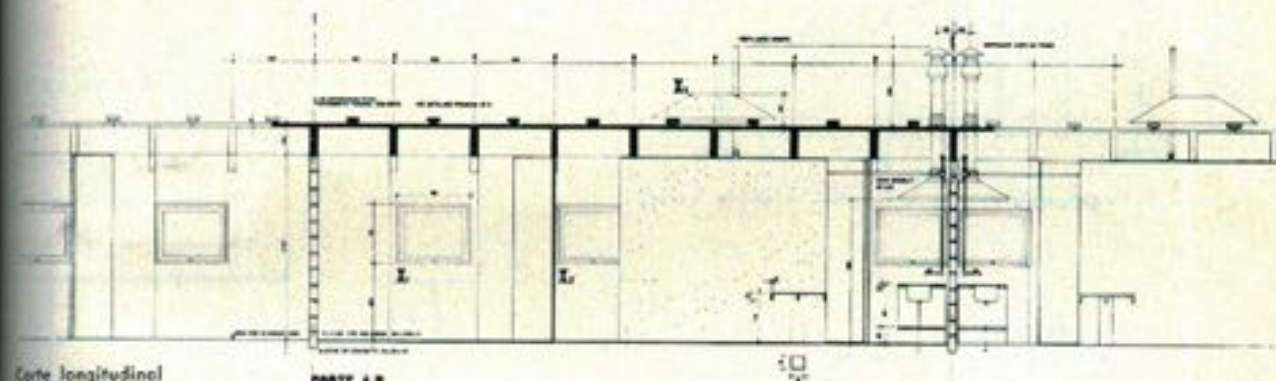
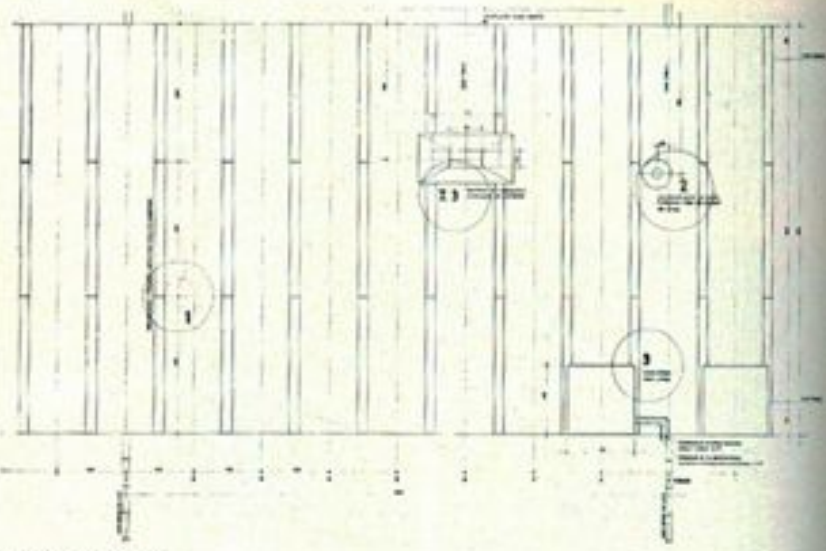
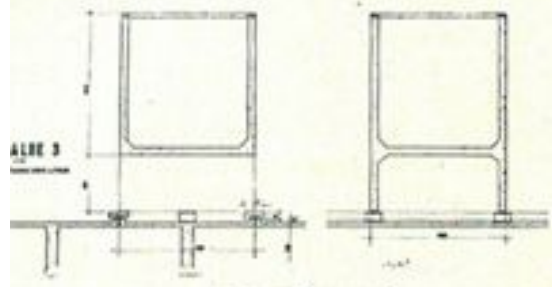


Não se trata de um sistema novo de peças préfabricadas. As peças parede e cobertura, principais, são bastante usuais, em princípio, em préfabricados. Há, apenas, do ponto de vista técnico a hipótese de se fazer a montagem absolutamente a seco.

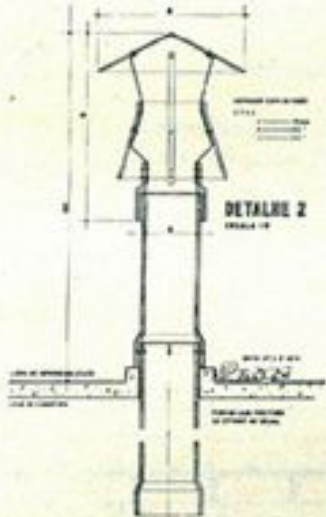
Dependendo da precisão da fabricação, o encaixe, simplesmente, da peça cobertura, deve estabilizar o sistema, constituindo cada nó das peças paredes um pilar de 8 por 12.

A planta, entretanto, é a proposta fundamental, como espaço da casa.

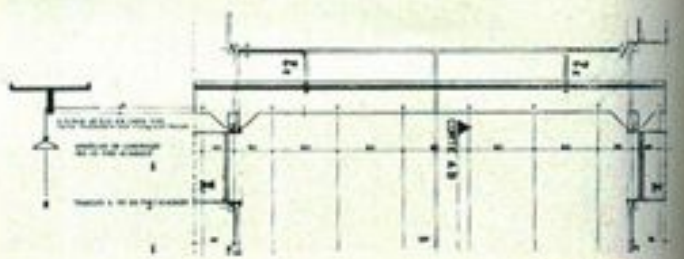
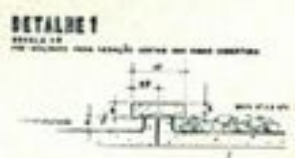




Planta da cobertura

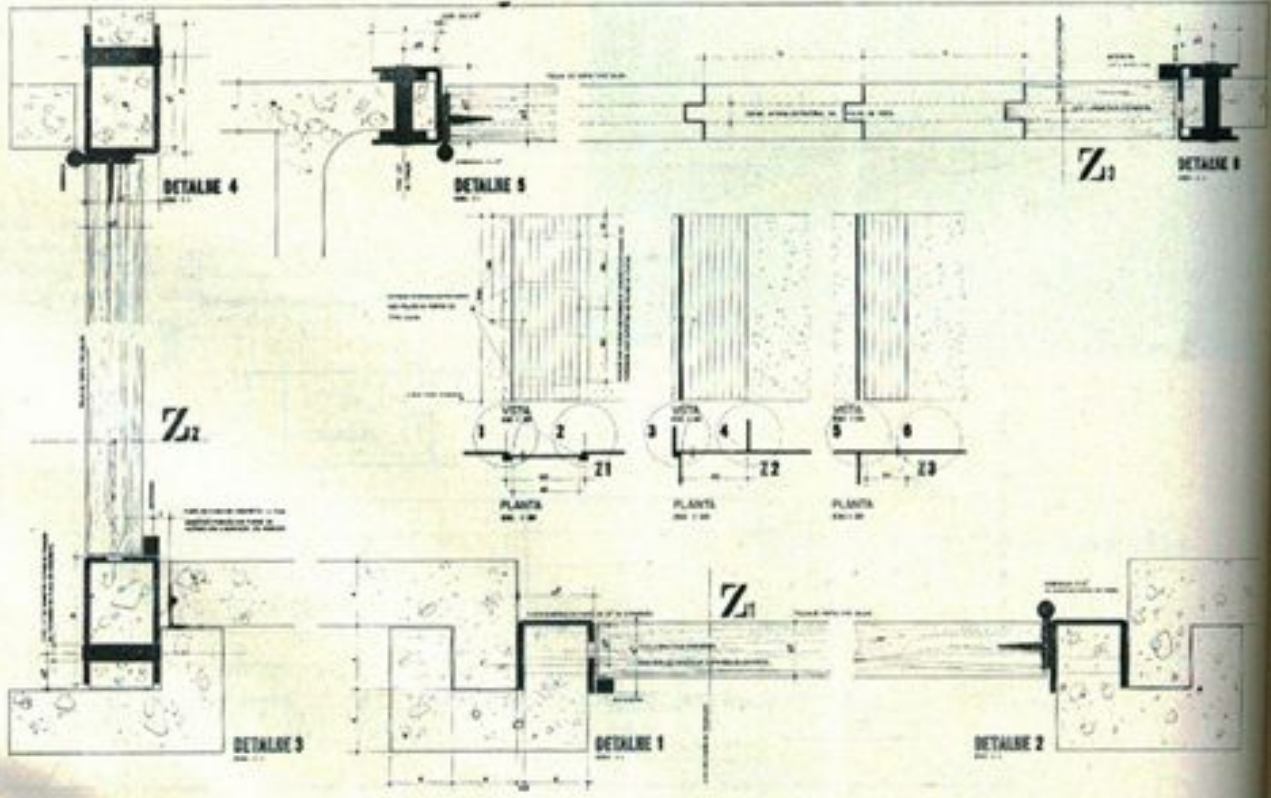


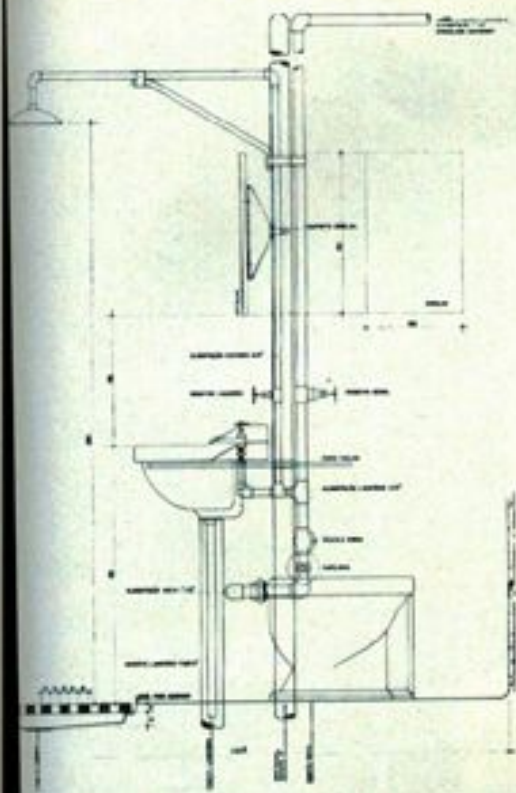
Cobertura



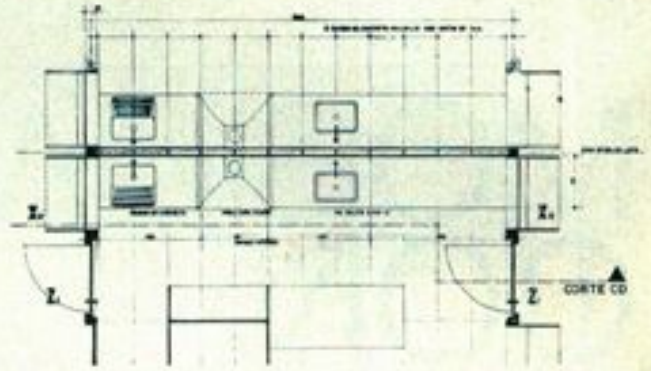
Peça de cobertura

Detalhes gerais das aberturas

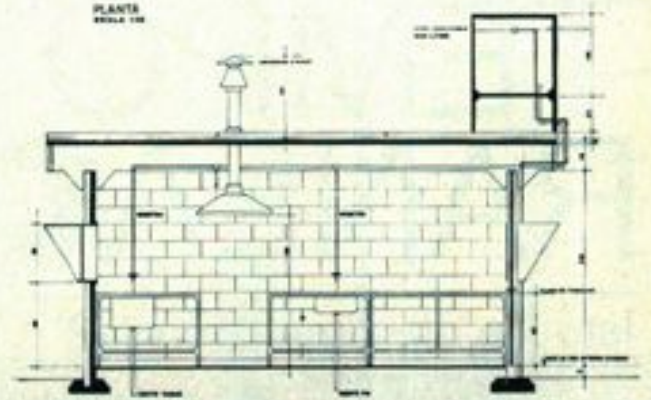




Detalhe da rede hidráulica

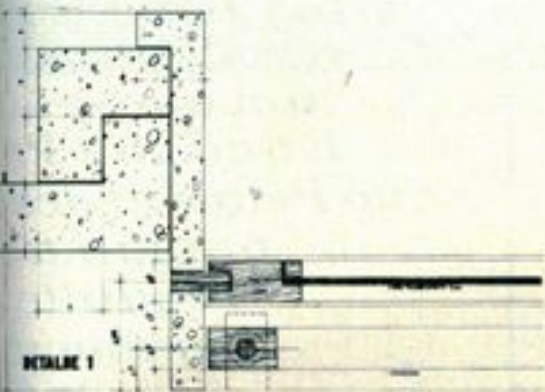


PLANTA

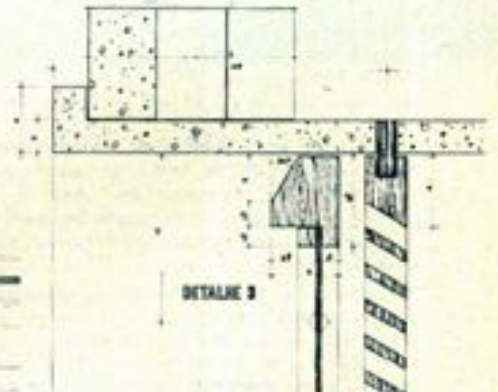


Corte e planta do plano geral de lavanderia e cozinha

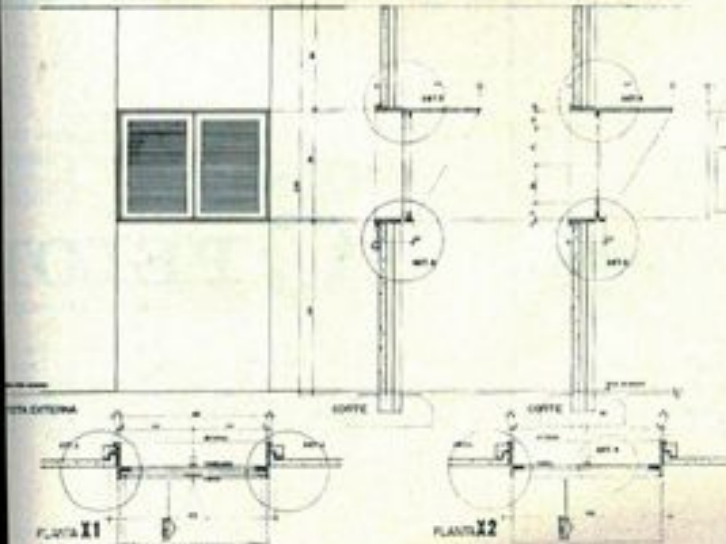
Detalhes gerais dos caixilhos



DETALHE 4

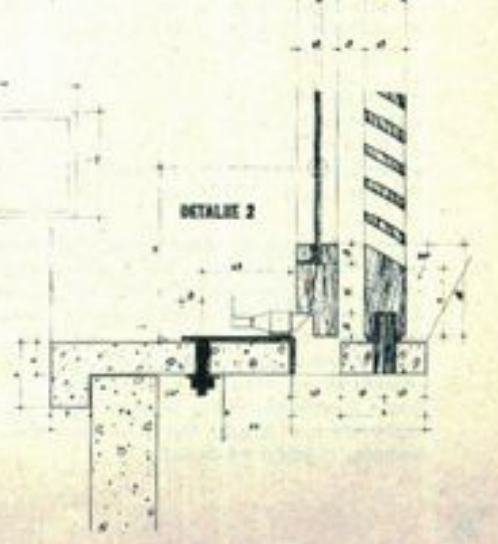


DETALHE 3



PLANTA X1

PLANTA X2



DETALHE 2